



Setup Guide

Installing Canon Print Drivers



Download the correct Print Drivers from our Website.

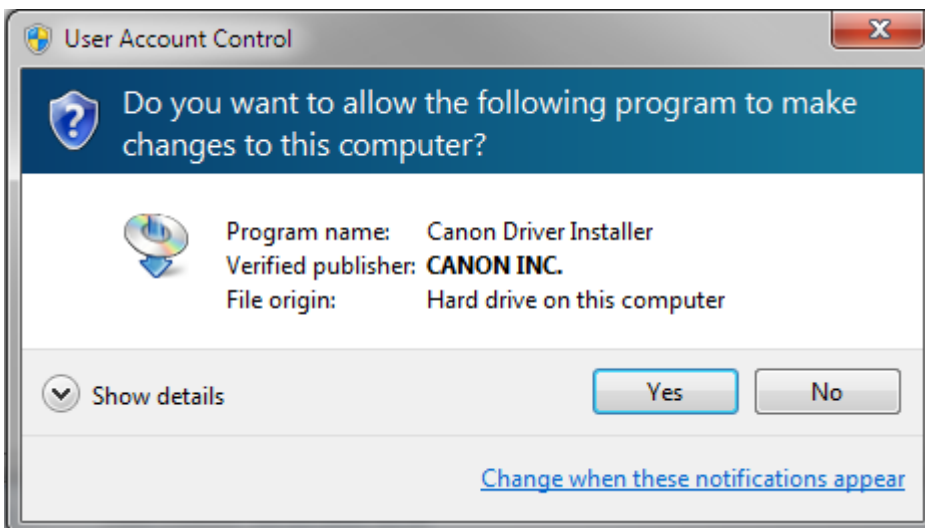
Http://condoroffice.co.uk/pcldrv32.zip	IR Range 32 bit
Http://condoroffice.co.uk/pcldrv64.zip	IR Range 64 bit
Http://condoroffice.co.uk/irapcldrv32.zip	IRAdv Range 32 bit
Http://condoroffice.co.uk/irapcldrv64.zip	IRAdv Range 64 bit

Unzip to desktop

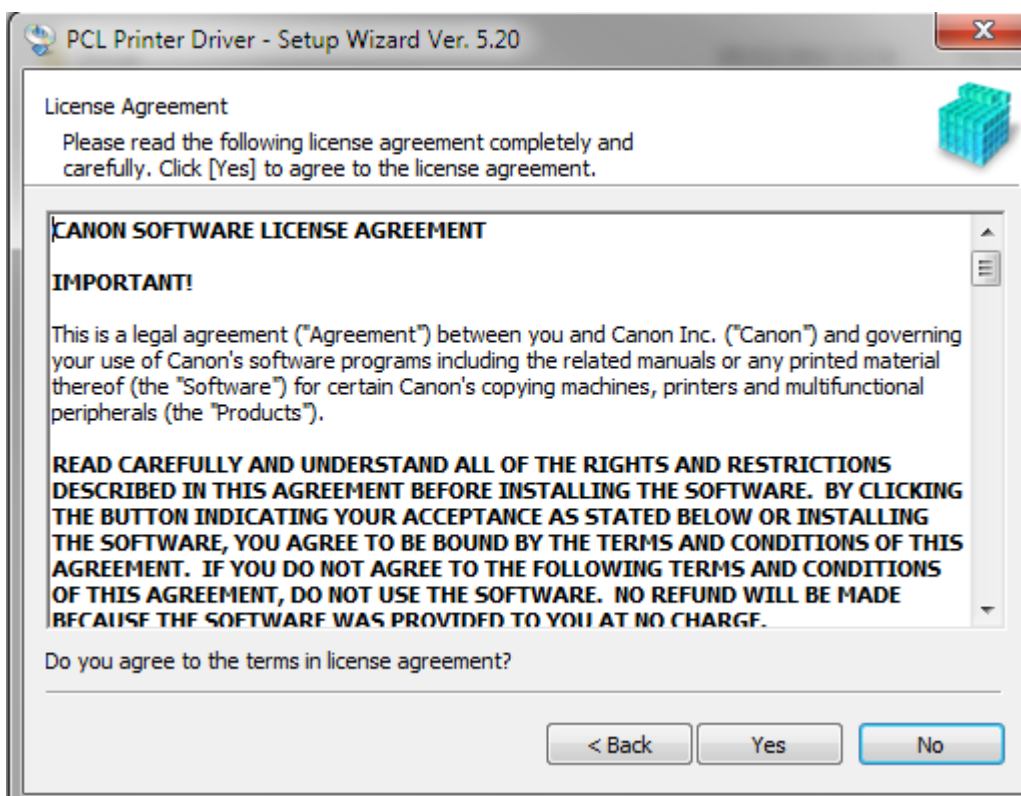
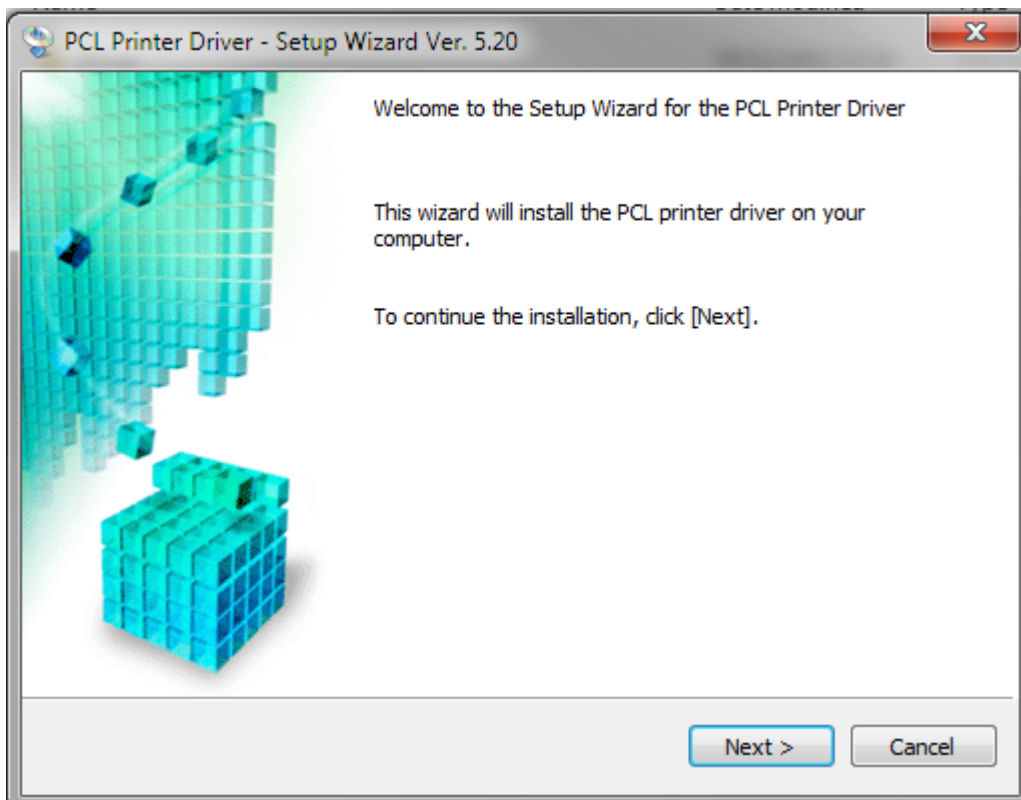
Run Setup.exe

Name	Date modified
Driver	05/12/2011 12:34
misc	05/12/2011 12:34
Readme.hta	05/12/2011 12:22
Setup.exe	05/12/2011 12:22
Setup.ini	05/12/2011 12:22

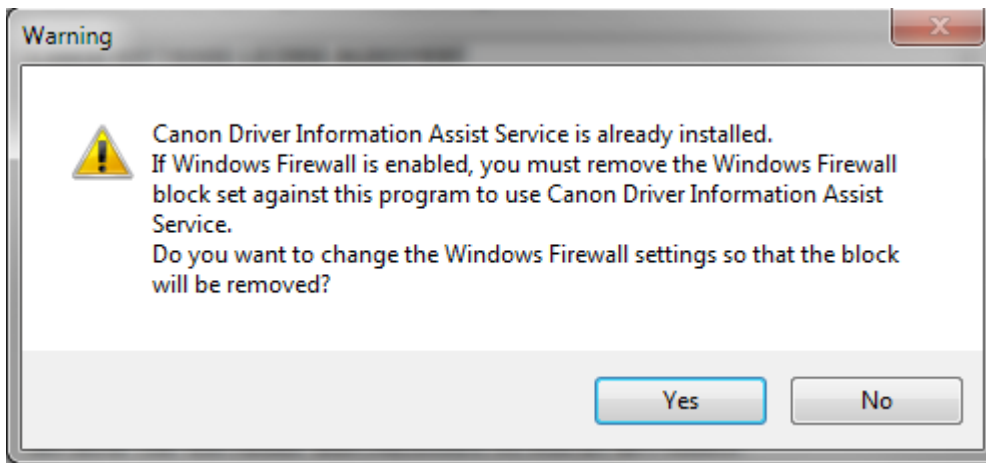
Accept the Installer if asked



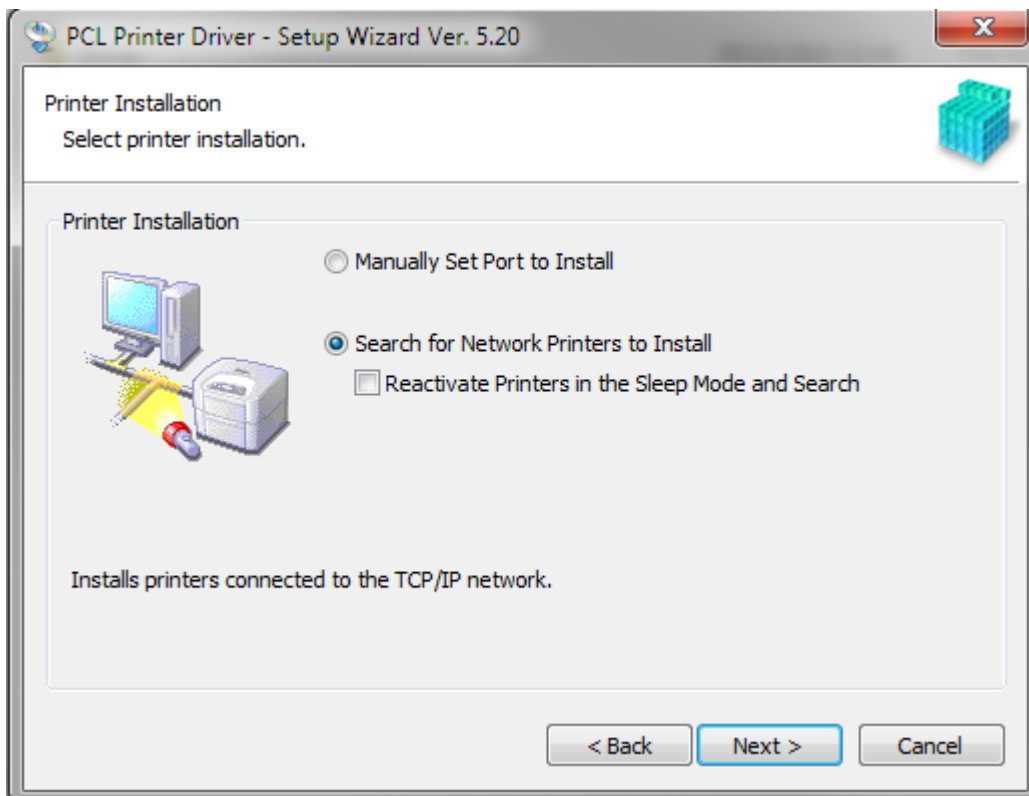
Follow the prompts for yes and next to accept the License



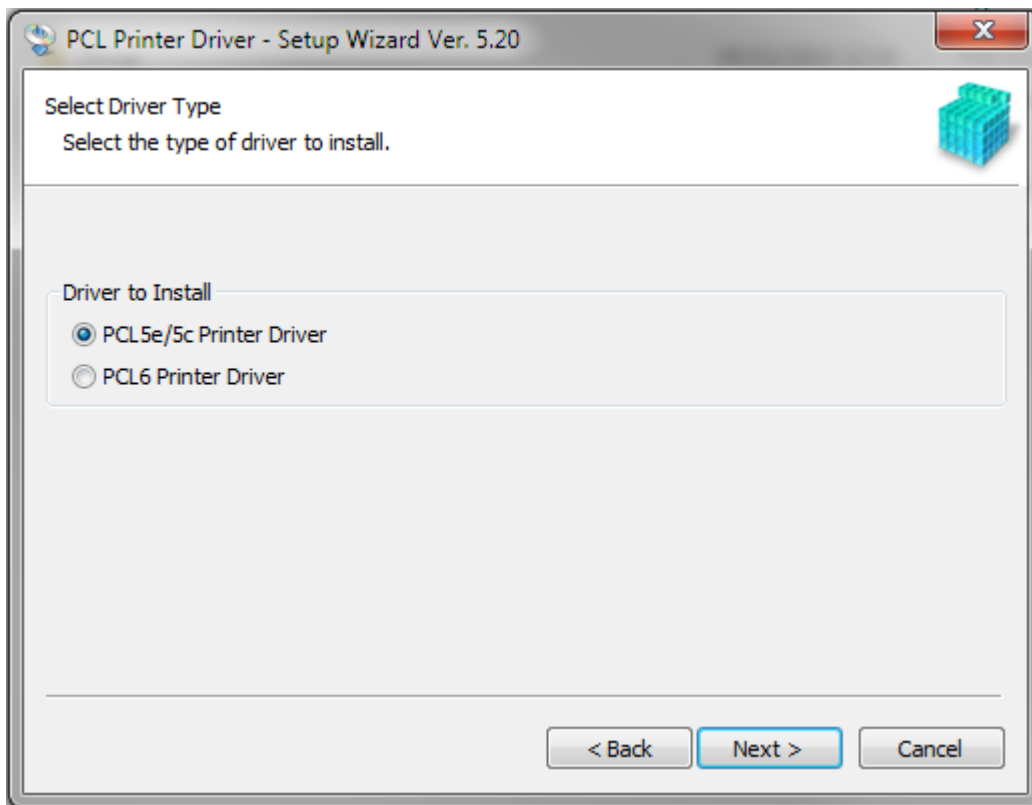
Yes to unblock the Firewall



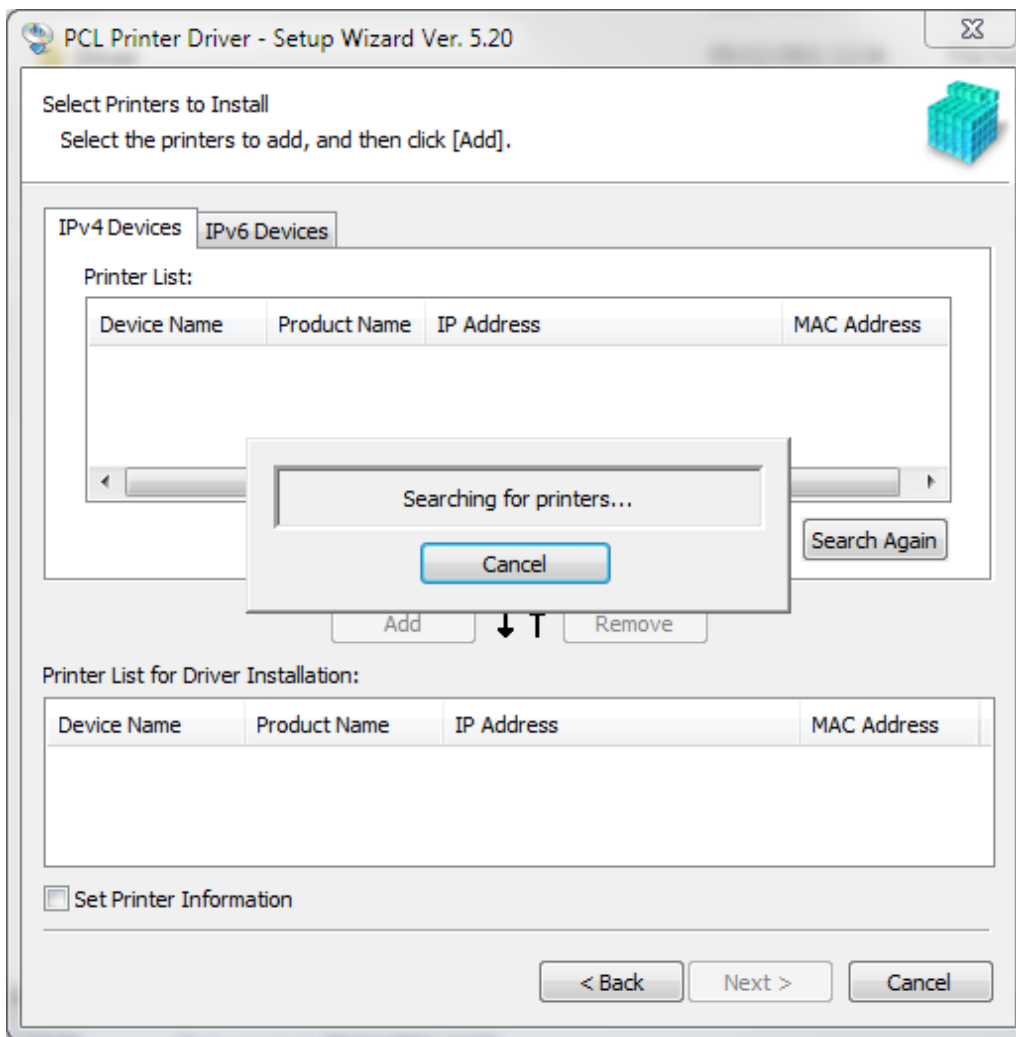
Search for Network Printers to Install



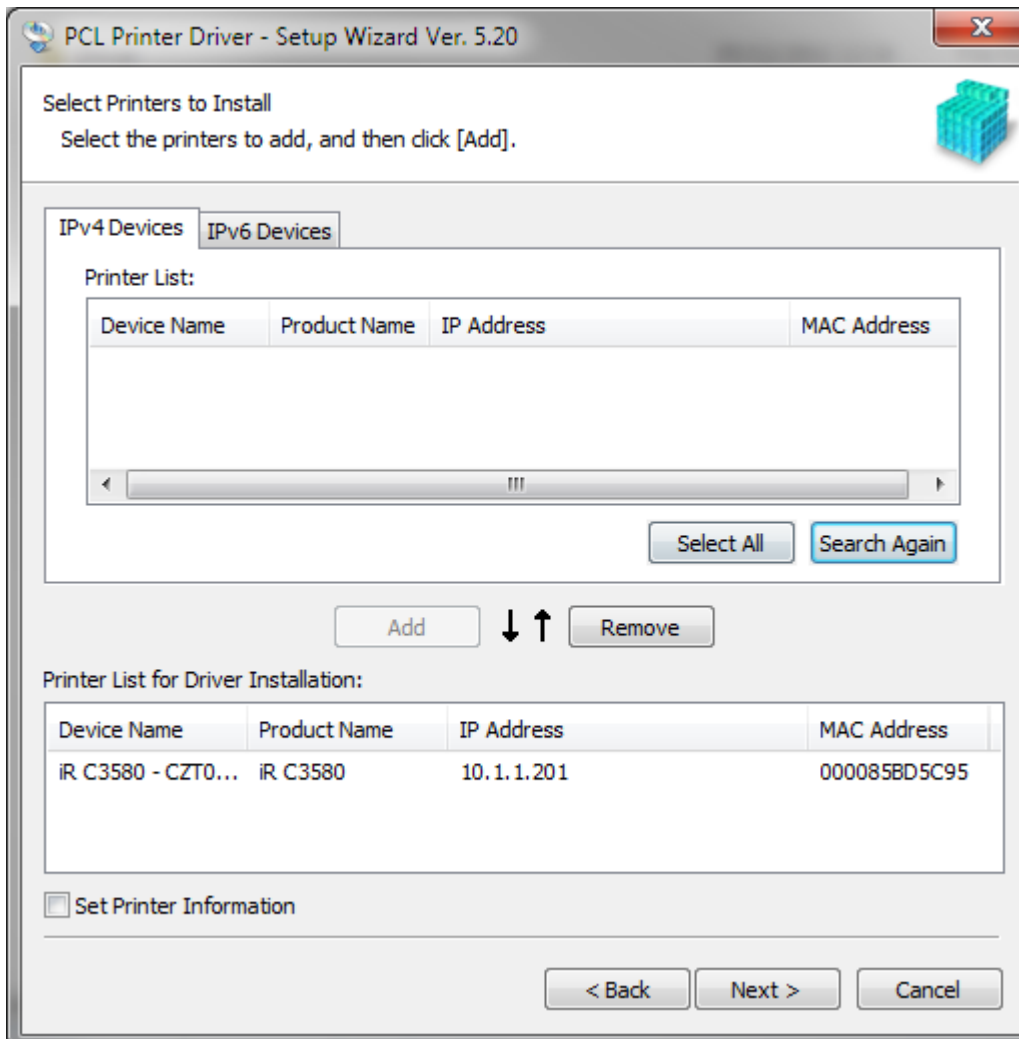
PCL5e/5c Printer Driver



If you see a box for Canon Driver Information Assist then tick it (used for ID Modes)



The copier/s will appear in the top box. Select All and Add so they drop to the bottom box



Follow the prompts through to the end

A restart is normally not needed

